

HITACHI
Inspire the Next



UX Series
Inkjet Printer

Hitachi
UX
SERIES

Hitachi's UX Series continuous inkjet printers represent the pinnacle of innovation in marking and coding technology, all while showcasing Hitachi's reputation for Reliability, Efficiency, and Ease of Use.

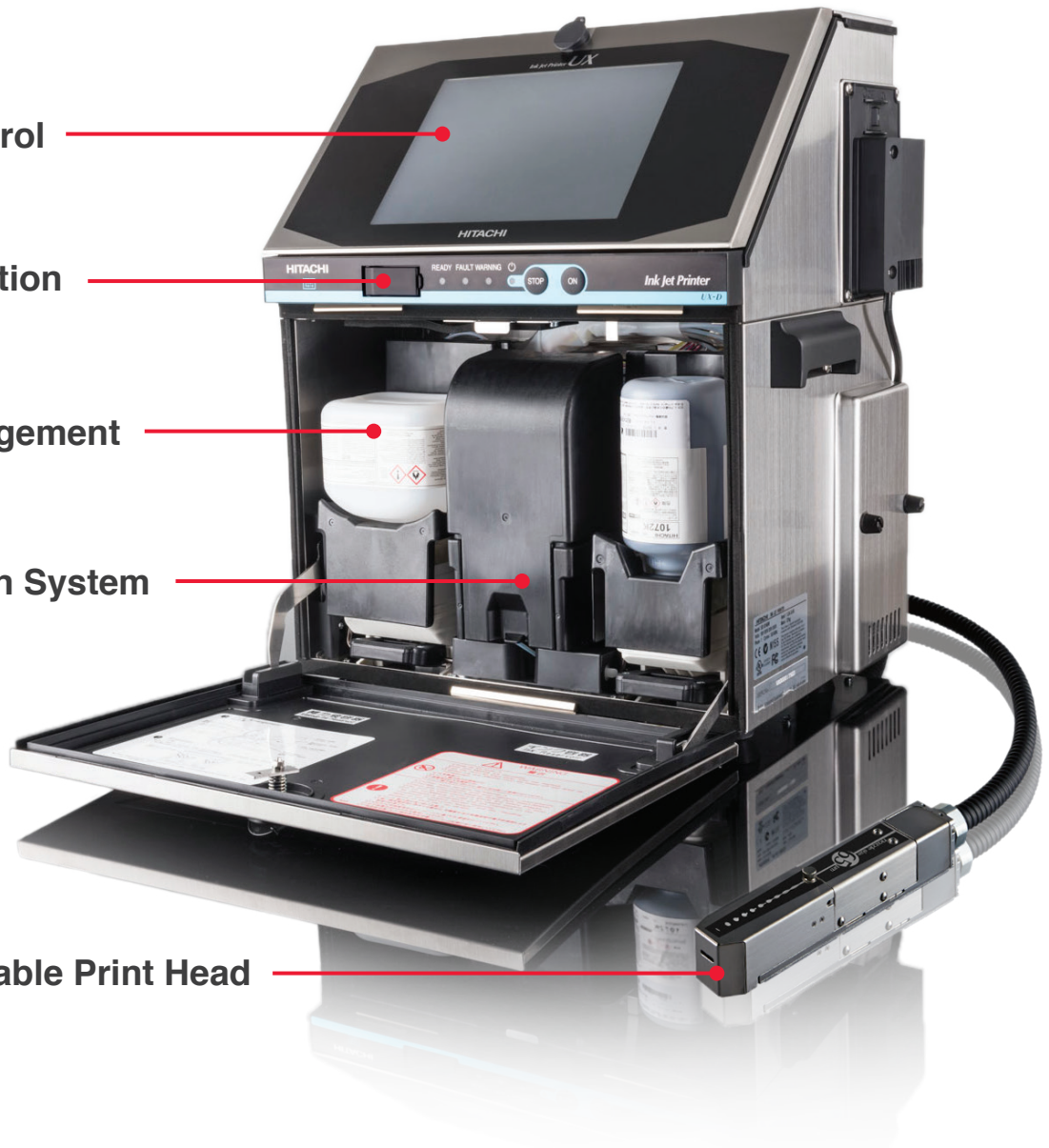
Intuitive Print Control

Worry Free Integration

Simple Fluid Management

Reliable Circulation System

New Versatile, Durable Print Head



Learn how your peers are benefiting from Hitachi Continuous Inkjet innovations.



Giroux's Poultry Farm Improves Uptime and Reduces Product Marking Costs by 43%



While reducing print cost and downtime, Baker Cheese meets consumer expectations with consistent code dates.

New Versatile, Durable Print Head



Versatile Tapered Print Head

Proximity to product can be challenging using traditional print heads, but the UX's new Tapered print head technology allows for even closer printing, thus improving print quality as a result.



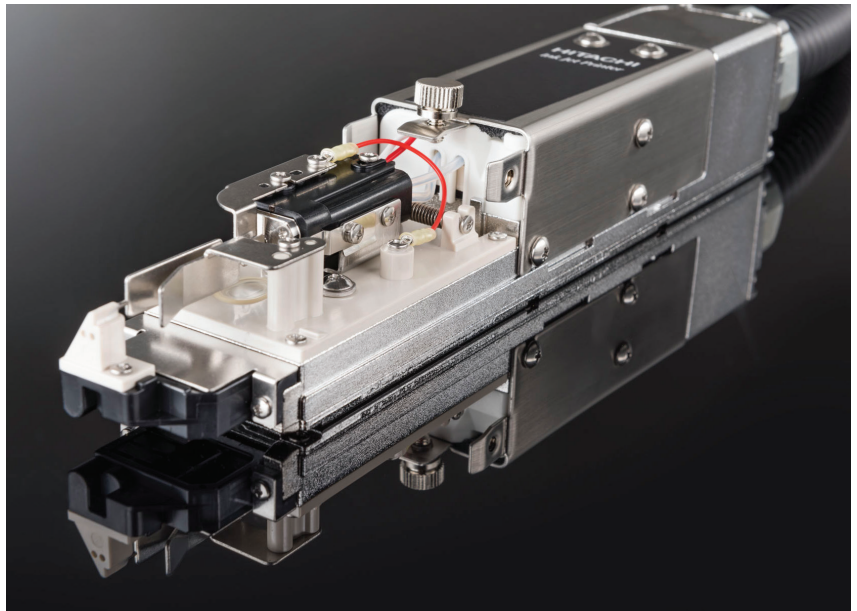
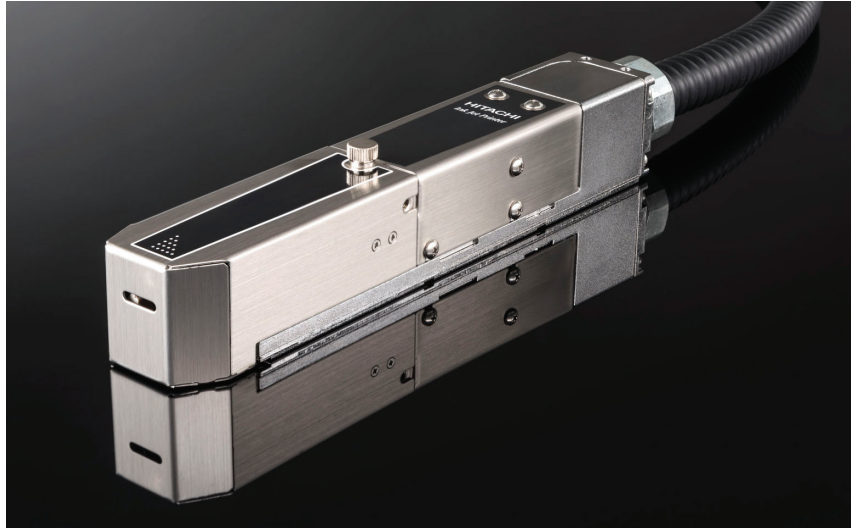
Durable Ni-Cr Plating

The UX Series print head features a new Nickel-Chrome finish, giving it exceptional corrosion resistance and increasing the print head's lifespan in demanding environments like those requiring wash-down or exposure to caustic chemicals.



Flexible 6-Line Print

A single UX print head can now print up to six lines of text by employing an innovative print control system. Also available in the UX Series is Hitachi's Industry first interlaced drop control system, resulting in the highest quality code available regardless of print height.



Reliable Circulation System



Reliable Diaphragm Pump

At the heart of the UX Series inkjet printer is a diaphragm based circulation system. Unique to Hitachi, the UX's diaphragm system dramatically improves reliability while decreasing makeup consumption.

A dedicated viscometer gives a true measure of the ink's viscosity further increasing reliability and uptime.



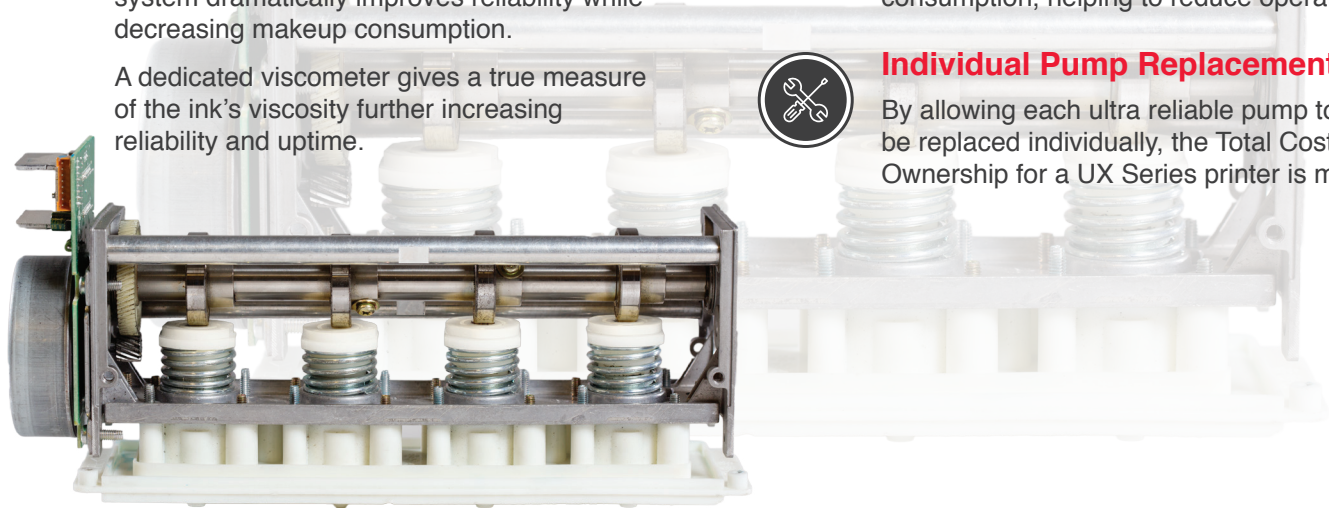
Motor Speed Control

Hitachi UX Series printers incorporate a temperature regulated motor speed control leading to a minimization of solvent consumption, helping to reduce operating cost.



Individual Pump Replacement

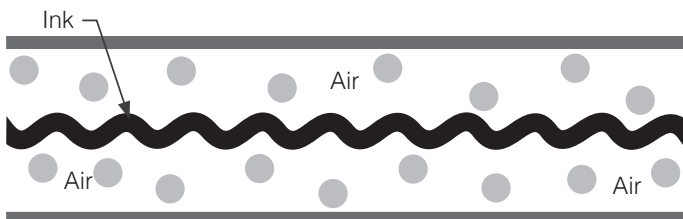
By allowing each ultra reliable pump to be replaced individually, the Total Cost of Ownership for a UX Series printer is minimized.



Efficient Ink Recovery



About **30%** reduction compared to former models *



Traditional Fluid Recovery Systems

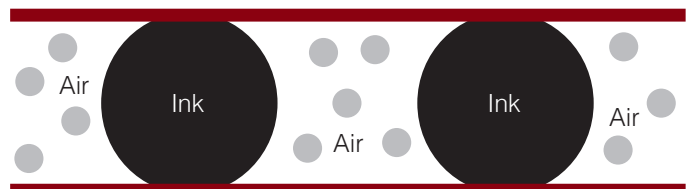
Ink passes through a channel of air increasing the evaporation rate and, consequently, fluid makeup consumption.



Reduced Makeup Consumption and Running Cost

Featuring Pulse Recovery Technology

Hitachi's ink recovery technique and motor speed control, that is based on environmental conditions, suppresses makeup evaporation, thus achieving industry-leading levels of makeup consumption.



Hitachi's Pulse Recovery System

Ink is recovered using a pulsating system which reduces the evaporation rate and makeup consumption, thus increasing your bottom line.

* As compared to Hitachi current models with 1067K ink at 20°C. About 30% reduction for UX-B and UX-D.

Simple Fluid Management



Mess-Free, Mistake-Proof Fluid Refills

Intelligent fluid cartridges reduce the possibility of hazardous fluid spills during refill. Being two different shapes, the Ink and Makeup cartridges are easily identifiable as well as sized to fit in each respective receptacle.



RFID Recognition

Error reduction is key to increased uptime and that's why the UX Series now features RFID Recognition for ink and makeup replacement. A quick scan of each bottle allows the system to identify the ink or makeup in question and instruct the operator based on compatibility.

* Some geographic areas are excluded.
Hitachi Industrial Equipment Systems Co., Ltd. declares that the IC tag reader is in compliance with the essential requirements and other relevant provisions of the FDD Part15 subpart C, EN 301 489-1/-3, EN 300 330-1/-2



Tool-less Filter Replacement

Ink Filters can be replaced without the use of tools or a technician, resulting in virtually zero downtime for simple maintenance. No more mandatory, time based failure due to machine operation. These printers provide the lowest total cost of operation on the market.



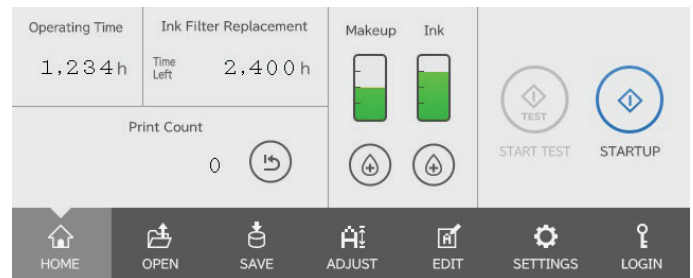
Simple, Economical Disposal

Ink and Makeup cartridges can be used right up to the last drop, and drain fully into their respective reservoirs. Complete fluid evacuation allows ink and makeup containers to be disposed of through conventional means instead of costly hazardous disposal methods.



Informative Icons

Icons on screen provide simple, visual feedback to an operator. Ink and Makeup level gauges show the current fluid level and indicate when it's time to replace each cartridge. This allows for more efficient ink usage, reduces waste, and further contributes to cost reduction.



Makeup Cartridge 800 mL

Ink Cartridge 500 mL



Intuitive Print Control



Intuitive User Interface

A 10.4-inch TFT LCD touch-panel screen provides a wide, easy-to-see viewing angle and intuitive operation. In addition, when changing print messages, a preview function allows the operator to verify on screen what message will be changed to help avoid erroneous printing.



Troubleshooting Guide

The UX Series features an integrated, easy to access troubleshooting guide, helping operators easily find answers to common issues and reducing downtime due to simple problems.



Easy USB Message Transfer

Messages can be easily backed up onto a USB flash drive for convenient transferring to other printers.



Convenient Remote Management

Ethernet is a standard feature on UX-D machines. In addition, open network is supported, allowing easier system integration. Collective management via a host system enables two or more devices to be easily networked.



Worry Free Integration



IP-65

The UX Dynamic model printer is IP-65 rated, meaning it can be integrated into a variety of production environments without worry or modification of current production processes such as wash-down procedures. Hitachi UX Series printers can operate in High and Low temperature environments as well as dusty environments, allowing them to be placed close to the action. UX Basic machines are IP-55 standard.



High-Temperature
up to 50°C (122°F)



Dusty Environment



Low-Temperature
down to 0°C (32°F)



Wash-Down

Standard Specification

Item	Model		
	UX-B160W Basic	UX-D160W Dynamic	
Nozzle size	65µm		
Max. print line number	Up to 3 lines	Up to 3 lines (option: up to 6 lines)	
Max. # of print characters	Up to 240 characters	Up to 240 characters (option: up to 1,000 characters)	
Font (Horizontal x Vertical)	4 x 5	-	Option: ✓
	5 x 5	✓	✓
	5 x 7(8), 9 x 7(8)	✓	✓
	7 x 10	✓	✓
	11 x 11	✓ (Chinese only)	✓ (Chinese only)
	10 x 12	✓	✓
	12 x 16	✓	✓
	18 x 24	✓	✓
	24 x 32	-	Option: ✓
	30 x 40	-	Option: ✓
36 x 48	-	Option: ✓	
Character height	2 - 10 mm		
Display & input device	WYSIWYG design Display: TFT LCD (10.4" color), backlight provided Input device: Touch panel, input sound provided		
Screen language (2 languages selectable)	English, Chinese, Korean, Thai, Vietnamese, German, French, Dutch, Italian, Spanish, Portuguese, Swedish, Danish, Greek, Russian, Czech, Polish, Arabic, Serbian, Turkish, Hungarian, Bulgarian, Catalan, Romanian, Finnish, Norwegian, Slovenian		
Maximum print rate (characters per second) (Font 5x5, space 1, 1 line)	Up to 1,148	Up to 1,148 (Optional: Up to 2,296)	
Standard characters	Alphanumeric (A-Z, a-z, 0-9), symbols (27) and space: Total 90		
User pattern	50 patterns each for dot matrix	200 patterns each for dot matrix	
Print functions	Calendar, Count, Font mixture, Password		
Barcode printing	-	code39, ITF, NW-7, EAN-13, EAN-8, UPC-A, UPC-E, code128/ EAN-128, GS-1 Databar	
2D code printing	-	Data Matrix (Alphabet: 49 characters/Numerals: 98 characters), QR, Micro QR code	
Message storage capacity	150 messages	300 messages [Option: Up to 2,000 messages (depends on data content)]	
Input signal	Print target detection Rotary encoder pulse (NPN/PNP Selectable)	Print target detection, Printing stop, Rotary encoder pulse, Reciprocativ printing, Remote control (Run, Stop, High-voltage ON/OFF, Reset), (NPN/PNP Selectable)	
Output signal	Print ready, Fault, Warning (NPN Only)	Print in progress or Print complete, Online (NPN/PNP Selectable), Print ready, Fault, Warning (NPN Only)	
Data interface	Option (RS-232C at baud rates selectable up to 115,200bps)	RS-232C at baud rates selectable up to 115,200bps	
Ethernet (Modbus communication)	-	IEEE802.3, 100BASE-T	
External memory	USB for user data storage		
Printhead cable length / angle	4m (in-line / 90 degrees)		
Operating temperature range	0-50°C (1067K Ink)		
Operating humidity range	30-90% RH (no condensation)		
Power supply (Automatic voltage selection)	AC100-120/220-240V±10% 50/60Hz 120VA		
Dimensions (Width x Depth x Height)	400 x 320 x 527 mm		
International protection	IP55	IP65	
Approximate weight	27kg		

Information in this brochure is subject to change without notice.

HITACHI

Inspire the Next



Visit www.hitachi-america.us/inkjetprinters/
or call (866) 583-0048

For more information, please contact your nearest sales representative.

Hitachi Industrial Equipment
Hitachi Industrial Equipment Systems Co., Ltd.
Hitachi America, Ltd.



Registration number: JQA-QMA12087
Registration date: April 1, 2005

The Marking Systems and Hoist Systems Division (Taga Division) of Hitachi Industrial Equipment Systems Co., Ltd. obtained international standard ISO 9001 certification for the quality assurance of the Ink Jet Printer contained in this brochure.