

# HSAJET® Printheads

HP TIJ 2.5

## HSAJET® and HP TIJ 2.5 technology

The HSAJET® printers use HP thermal inkjet technology TIJ 2.5, providing high-resolution printing up to 600 dpi for sharp text, crisp barcodes and intense spot colours.

Versatile and affordable, HP's advanced inkjet technology powers a wide range of industrial and commercial printing applications - from simple text documents to vivid, complex print jobs on many types and sizes of media.

## HSAJET® printheads

The HSAJET® printheads are available in three different versions: Top - Side - Side/low

The physical dimensions of each version along with cable connector directions provide advantages to each printhead. This facilitates the installation.

The robust stainless steel design meets the demands for production environments.

## HSAJET® F-type printheads

Every stall in our new printheads has a switch as well as a fuse. These have been added to avoid damage to the printhead if ink-cartridges are being taken out of the stall during print-mode. If a cartridge is taken out, the power to the printhead is cut off.

All our new controllers use the F-type printheads.



The HSAJET® printheads are based on HP Thermal inkjet technology TIJ 2.5



## HP key-features

- Cost-effective: No warm-up cycle and no down time
- Easy to use: No special training required to operate and maintain thermal inkjet printers
- Fast: Hundreds of tiny nozzles firing at high frequency allow high-quality printing at high speeds
- Reliable: TIJ is less sensitive to air bubbles in the firing chamber than other printing technologies, avoiding print quality problems and delays caused by trapped air
- Flexible: Supports a wide variety of media
- High quality: TIJ places smaller drops more accurately, producing consistently superb image and text quality
- Environmentally safe: With thermal inkjet, there is no need for service technicians qualified to handle volatile solvents, and no noxious fumes
- Lower cost of ownership: A thermal inkjet printer can cost much less than other printing equipment, reducing the market entry cost

# Technical Details

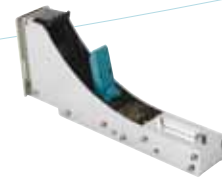
## F-TYPE PRINTHEADS CONFIGURATIONS

TOP/DOWN

SIDE

SIDE/LOW

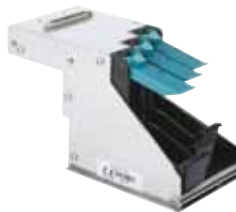
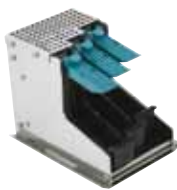
1-PEN



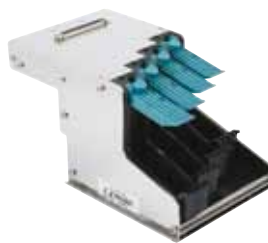
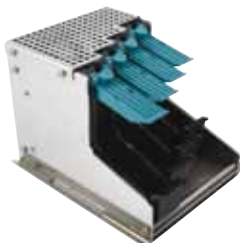
2-PEN



3-PEN

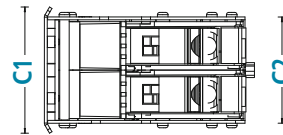
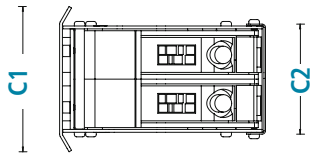
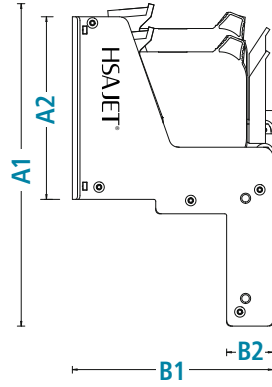
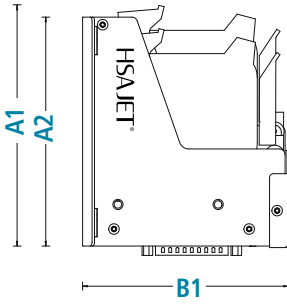


4-PEN



# Technical Details

## F-TYPE PRINTHEADS DIMENSIONS

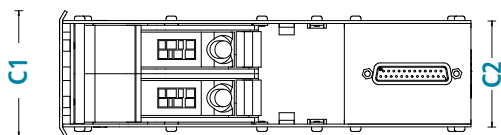
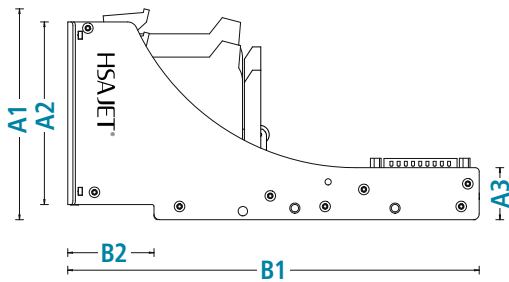


### TOP/DOWN

Dimensions in mm (inches)	A1	A2	B1	C1	C2
1-PEN	115 (4.51)	108 (4.24)	106 (4.18)	43 (1.68)	32 (1.26)
2-PEN	128 (5.04)	121 (4.77)	109 (4.29)	77 (3.02)	58 (2.29)
3-PEN	140 (5.52)	133 (5.24)	109 (4.29)	102 (4.03)	84 (3.30)
4-PEN	152 (6.0)	146 (5.73)	109 (4.29)	128 (5.05)	109 (4.31)

### SIDE

Dimensions in mm (inches)	A1	A2	B1	B2	C1	C2
1-PEN	158 (6.23)	84 (3.32)	106 (4.18)	25 (0.97)	45 (1.76)	32 (1.26)
2-PEN	171 (6.71)	97 (3.80)	106 (4.18)	25 (0.97)	67 (2.63)	56 (2.21)
3-PEN	183 (7.20)	109 (4.29)	106 (4.18)	25 (0.97)	94 (3.68)	82 (3.22)
4-PEN	196 (7.70)	122 (4.79)	106 (4.18)	25 (0.97)	119 (4.69)	107 (4.23)



### SIDE/LOW

Dimensions in mm (inches)	A1	A2	A3	B1	B2	C1	C2
1-PEN	99 (3.91)	84 (3.32)	28 (1.08)	218 (8.57)	46 (1.80)	45 (1.76)	32 (1.26)
2-PEN	112 (4.39)	97 (3.80)	28 (1.08)	218 (8.57)	46 (1.80)	67 (2.63)	56 (2.21)
3-PEN	124 (4.87)	109 (4.29)	28 (1.08)	218 (8.57)	46 (1.80)	94 (3.68)	82 (3.22)
4-PEN	136 (5.36)	122 (4.79)	28 (1.08)	218 (8.57)	46 (1.80)	119 (4.69)	107 (4.23)

# Technical Details

## F-TYPE PRINTHEADS

### Technology

HP TIJ 2.5

### Printhead frequency

15 KHz

### Print height

12.7 - 50.8 mm / 1/2" - 2"

1 to 4 pens

### Print head distance

0.5 - 2.0 mm

(nozzle to print surface)

### Voltage

100-240 VAC

### Interface

SUB-D25

### Signals

Fuse signal

### Complies to

CE directives

### Housings

Stainless steel

### Environmental conditions

Operating temp.: 10 - 50° C

Humidity: 10 - 90%

Non-condensing

### Weight

see details below

Resolution (DPI) (horizontal x vertical)	Max. speed	
	m / min	feet / min
600 x 600	38	125
300 x 300	76	250
300 x 300 HS	152	500
300 x 150 HS	306	1000
150 x 150	152	500

## WEIGHT

in Kg / lbs	Top kg (lbs)	Side kg (lbs)	Side-Low kg (lbs)
1-pen (1/2")	0,37 (0,81)	0,36 (0,79)	0,48 (1,05)
2-pen (1")	0,62 (1,37)	0,60 (1,32)	0,73 (1,60)
3-pen (1 1/2")	0,82 (1,81)	0,99 (2,02)	0,91 (2,19)
4-pen (2")	1,04 (2,30)	1,07 (2,35)	1,28 (2,83)

### Accessories:

- Bridges in two standard lengths, special length available on request.
- Printhead mounts (for bridge) for downprint mounting.
- Foot plates for left or right travel
- Bracket for sensor mount on printhead
- HSAJET HP printheads with 1 to 4 pens can be combined and mounted on a common footplate.  
This enables printheads of 7, 8 or 9 pens.

DEALER:



150 William Street  
Perth Amboy, NJ 08861  
Toll Free: 1-800-298-8936  
Local: 1-732-324-0800  
Fax: 1-732-324-4488  
sales@hsausa.com  
www.hsausa.com